

DESIGN DATA

NORTRONICS
AUDIO HEADS

ZWIR & ZW2RK Cassette Z COMBO® R/P & Erase Head ONE AND TWO CHANNEL



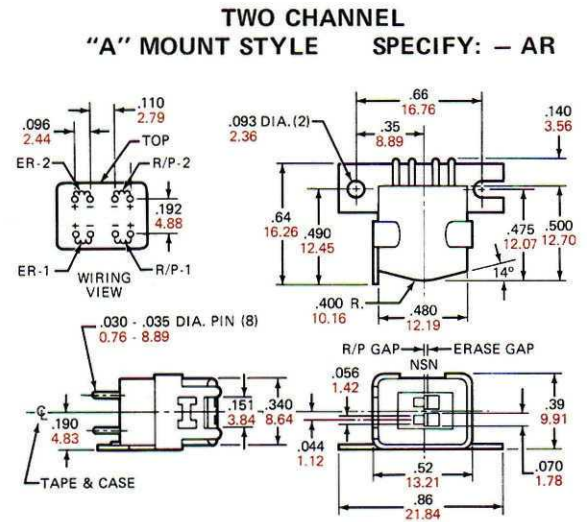
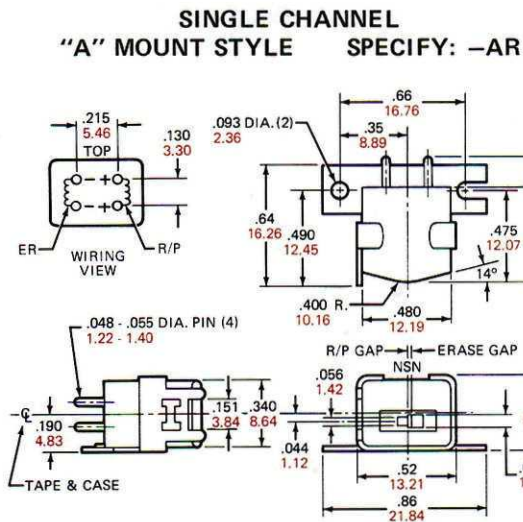
| ELECTRICAL (R/P SECTION) | MODEL NUMBER | | | |
|---|----------------------|----------------------|----------------------|----------------------|
| | ZW1R ZW2RK 36F | ZW1R ZW2RK 36K | ZW1R ZW2RK 38N | ZW1R ZW2RK 48N |
| Head Function (Typical) | Record/ Playback | Record/ Playback | Record Only | Record Only |
| Inductance, 1 kHz, millihenrys | 200 | 200 | 10 | 12 |
| Resistance, D.C., ohms | 280 | 480 | 50 | 62 |
| Impedance, 1 kHz, ohms | 1500 | 1500 | 90 | 100 |
| Gap Length, microinches | 50 | 100 | 200 | 200 |
| ELECTRICAL (ERASE SECTION) | | | | |
| Inductance, 1 kHz, millihenrys | 2.0 | 2.0 | 2.0 | 12 |
| Resistance, D.C., ohms | 36 | 36 | 36 | 150 |
| Average 1.875 IPS constant current record/playback characteristics using 3M277 tape biased @ 1 kHz and recorded 12 dB below tape saturation, with R/P shunt capacitor of 200 pf. See "Z" combo application notes | | | | |
| Erase Bias Current, 60 kHz, ma | 45 | 22 | 45 | 14 |
| Erase Bias Voltage, RMS, 60 kHz, volts | 21 | 12 | 38 | 53 |
| Record Current, microamps | 33 | 36 | 120 | 85 |
| 1 kHz Output, millivolts | .55 | .65 | — | — |
| 10 kHz/1 kHz Ratio, dB | -12 | -17 | — | — |

PHYSICAL CONFIGURATIONS

NOTES:

For reverse erase and R/P orientation specify: AL mount style

INCHES IN BLACK
MILLIMETERS IN COLOR



NOTE: Uses #105029 plugs, 2 per head.