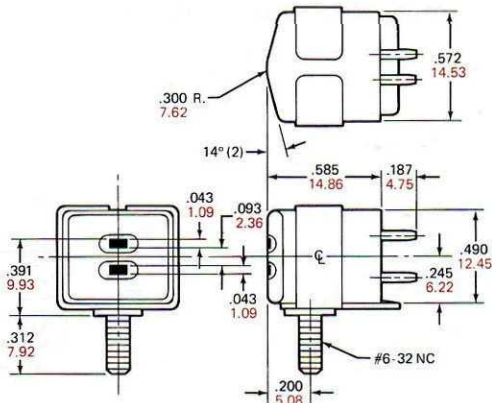


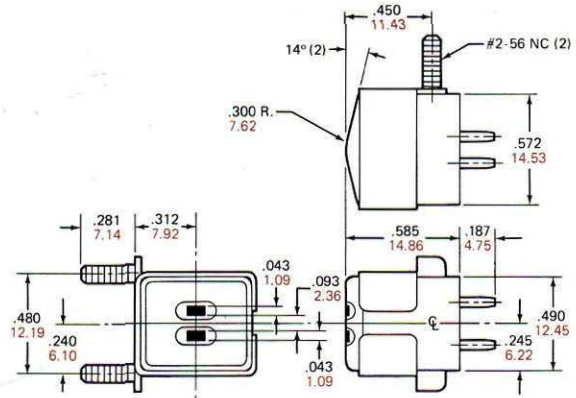
P-B2Q – PREMIUM SERIES

ELECTRICAL	MODEL NUMBER									
	P-B2Q 14R	P-B2Q 8K	P-B2Q 8F	P-B2Q 8R	P-B2Q 4R	P-B2Q 4K	P-B2Q 6K	P-B2Q 7K	P-B2Q 7F	P-B2Q 2K
Head Function (Typical)	Record Only	Record/Playback	Record/Playback	Record Only	Record Only	Record/Playback	Record/Playback	Record/Playback	Record/Playback	Record/Playback
Inductance - 1 kHz - millihenrys	2.0	20	20	10	50	100	200	400	500	800
Impedance - 1 kHz - ohms	15	170	150	70	400	650	1,300	2,500	3,300	3,800
Resistance, D.C. Stereo, ohms	6.0	32	32	32	100	100	200	400	315	750
Gap Length, microinches	500	100	50	500	500	100	100	100	50	100
1 kHz Crosstalk Rejection, dB	50	50	50	50	50	50	50	50	50	50
Average 7.5 IPS constant current record/playback characteristics using 3M150 tape peak biased @ 1 kHz and recorded 12 dB below tape saturation										
Peak Bias Current, 60 kHz, ma	3.5	1.7	1.6	1.3	.55	.70	.38	.25	.33	.14
Bias Voltage, RMS, 60 kHz, volts	3.1	8.0	7.0	3.5	8.0	18	21	35	40	44
Record Current, microamps	250	140	140	110	45	60	31	25	40	15
1 kHz Output, millivolts	—	0.35	0.4	—	—	0.9	1.3	1.6	1.7	2.5
10 kHz/1 kHz Ratio, dB	—	+1	+2	—	—	0	+1	+1	+2	+1
Average 3.75 IPS constant current record/playback characteristics using 3M150 tape peak biased @ 1 kHz and recorded 12 dB below tape saturation										
Peak Bias Current, 60 kHz, ma	3.0	1.5	1.4	1.2	.50	.50	.30	.20	.30	.12
Bias Voltage, RMS, 60 kHz, volts	2.7	7.0	6.0	3.2	7.0	13	16	25	34	37
Record Current, microamps	220	130	130	100	45	50	30	25	34	14
1 kHz Output, millivolts	—	0.3	0.3	—	—	0.7	1.0	1.4	1.2	2.0
10 kHz/1 kHz Ratio, dB	—	-9	-8	—	—	-10	-9	-9	-8	-9

BASE MOUNT CONFIGURATION

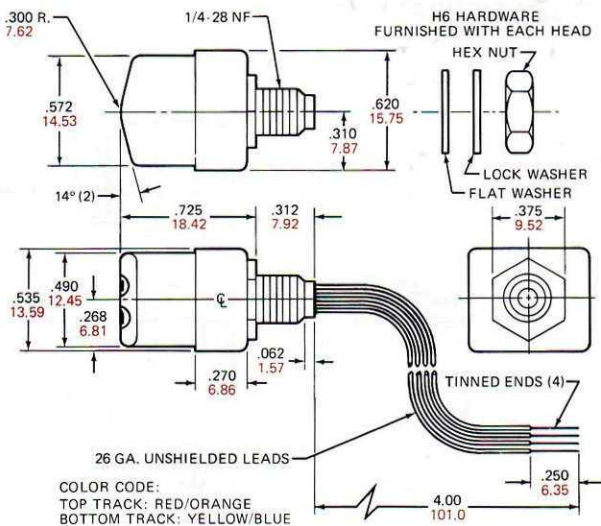


SIDE MOUNT CONFIGURATION



REAR MOUNT CONFIGURATION

SHIELDED LEADS



UNSHIELDED LEADS

