

# DESIGN DATA

NORTRONICS  
AUDIO HEADS

**ZJ2H & X-ZJ2H**  
**Half Track Stereo**  
**Z COMBO®**  
**Erase and R/P**  
**0.080" TWO CHANNEL**



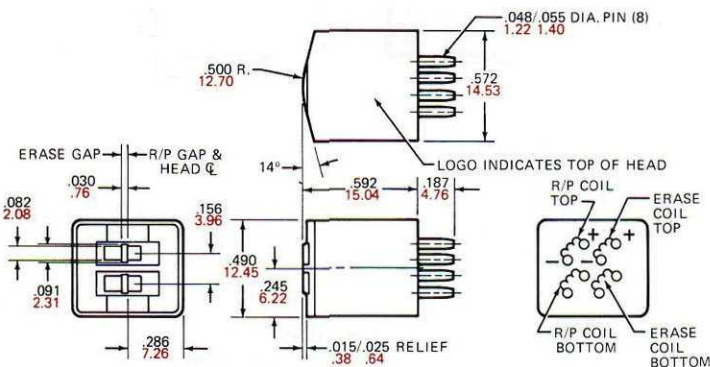
ELECTRICAL (R/P SECTION)	MODEL NUMBERS		
	ZJ2H 44R	X-ZJ2H 46K	X-ZJ2H 356L
Head Function	Record Only	Record/Playback	Record/Playback
Inductance - 1 kHz - millihenrys	50	260	350
Resistance, D.C., ohms	100	240	350
Impedance - 1 kHz, ohms	300	1,700	3,000
Gap Length, microinches	500	100	160
ELECTRICAL (ERASE SECTION)			
Inductance - 1 kHz, millihenrys	0.8	0.9	2
Resistance, D.C., ohms	8	8	12
<b>Average 3.75 IPS constant current record/playback characteristics using 3M 150 tape biased @ 1 kHz and recorded 12 dB below tape saturation, with R/P shunt capacitor of 200 pf. See "Z" combo application notes.</b>			
Erase Bias Current, 60 kHz, ma	40	40	25*
Erase Bias Voltage, RMS, 60 kHz, volts	11	11	13*
Record Current, microamps	60	40	25*
1 kHz Output, millivolts	—	1.5	1.1*
10 kHz/1 kHz Ratio, dB	—	-11	-11*†

## PHYSICAL CONFIGURATIONS

NOTE:  
INCHES IN BLACK  
MILLIMETERS IN COLOR

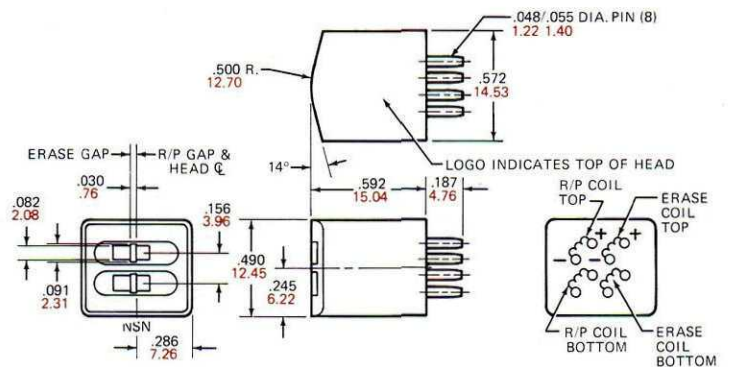
BASIC HEAD CONFIGURATION – NO MOUNT

X-ZJ2H



BASIC HEAD CONFIGURATION – NO MOUNT

Z-J2H



\* 1.875 IPS Data

† 5 kHz/1 kHz Ratio, dB