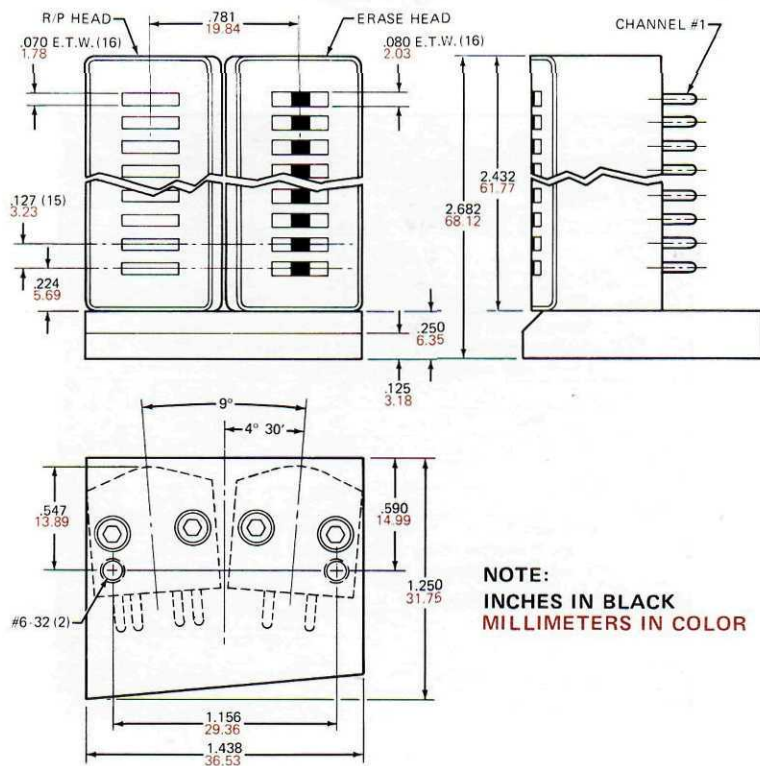


STUDIO SERIES HEAD ASSEMBLIES

H802002 16 CHANNEL R/P & ERASE ASSEMBLY, 2" TAPE



NOTE:
INCHES IN BLACK
MILLIMETERS IN COLOR

RECORD/PLAYBACK DATA

ELECTRICAL		MODEL H802003
Inductance @ 100 MV, 1 kHz, millihenrys	RECORD COIL	3.4
D.C. Resistance, ohms	RECORD COIL	35
100 kHz Impedance, ohms	RECORD COIL	2600
Inductance @ 100 MV, 1 kHz, millihenrys	PLAY COIL	50
D.C. Resistance, ohms	PLAY COIL	275
1 kHz Impedance, ohms	PLAY COIL	320
Transformer Crosstalk Play to Play, 1 kHz, dB		-50
Transformer Crosstalk Play to Play, 10 kHz, dB		-50
Gap Length, microinches		300
Track Width, inches		.070
Typical constant current record, unequalized playback characteristics on 3M 201 tape. Peak biased @ 1 kHz at a recorded level 12 dB below tape saturation @ 1 kHz		
		15 IPS
Peak Bias Voltage, 100 kHz, volts	RMS	8.0
Bias Current for above, ma		7.0
Audio Record Current, ma		0.44
1 kHz Playback RE 1 kHz, MV	•RMS	1.0
10 kHz Playback RE 1 kHz, dB		+9.0
15 kHz Playback RE 10 kHz, dB		-2.0

ERASE DATA

ELECTRICAL		MODELS H802002 & H802003	
Inductance, 1 kHz @ 10 MV, millihenrys	RMS	170	
D.C. Resistance, ohms		3.0	
Impedance @ 60 kHz, ohms		70	
Impedance @ 100 kHz, ohms		110	
Track Width, inches		.080	
Gap Length, inches		.003	
Track Spacing, Center to Center, inches		.130	
Typical characteristics for minimum of 70 dB erasure of a 400 Hz saturated signal on 3M 201 tape			
		60 kHz, 7.5 IPS	100 kHz, 15 IPS
Erase Voltage, volts	RMS	5.0	11.0
Erase Current, ma		80	95
Saturation Voltage, volts		10.0	16
Saturation Current, ma		160	160



STANDARD HEAD MOUNTS

Studio Series Heads are supplied without mount, with drilled and tapped holes in base (illustrated on previous pages), or with Standard Mount shown at right. Special mounts are available. Contact us for custom requirements.

