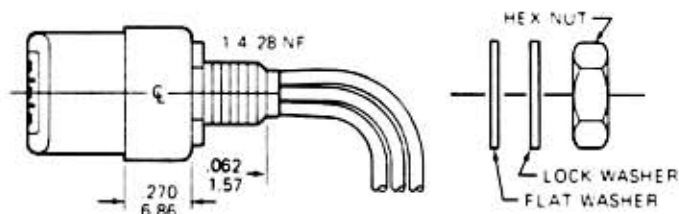


HEAD OUTLINES

NOTE: DIMENSIONS ARE SHOWN IN INCHES OVER MILLIMETERS.

TYPICAL REAR MOUNT



1 RED-ORG	
2 YEL-BLU	
Stereo Heads	
1200/2000 etc.	
B2Q/B2H/SEH	

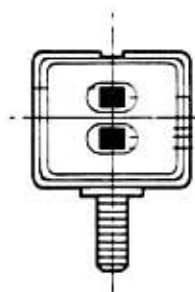
ERASE	R/P
1 BLK-WHT	RED-ORG
2 BRN-GRN	YEL-BLU
COMBO 6100/A2H/A1HC	
(Mono Use #1)	

1 BLK-RED	
2 BRN-ORG	
3 GRN-YEL	
4 WHT-BLU	
5600/5830	
BQQ/BQL	

1 RED-ORG	
2 YEL-BLU	
3 WHT-BLK	
5700/B3Q	

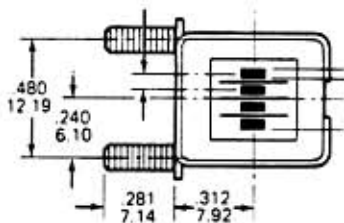
REAR MOUNT LEADS - COLOR CODE

47 REAR MOUNTS



SINGLE 6-32 STUD
 (.200 inch back from from head face, spot welded to spring clip.)
 QK-19 "SE" Erase Heads
 QK-21 "G" Size R/P Heads
 QK-66 All "B" Size Heads

48 BASE MOUNT QUIK-KITS



TWO 2-56 STUDS
 (On side of spring clip.)
 QK-18 "SE" Erase Heads
 QK-20 "G" Size R/P Heads
 QK-38 All "B" Size Heads

49 SIDE MOUNT QUIK-KITS